



Apartment 137, 175, The Vibe Broughton Lane

Salford, Salford, M7 1UZ

Offers in excess of £145,000



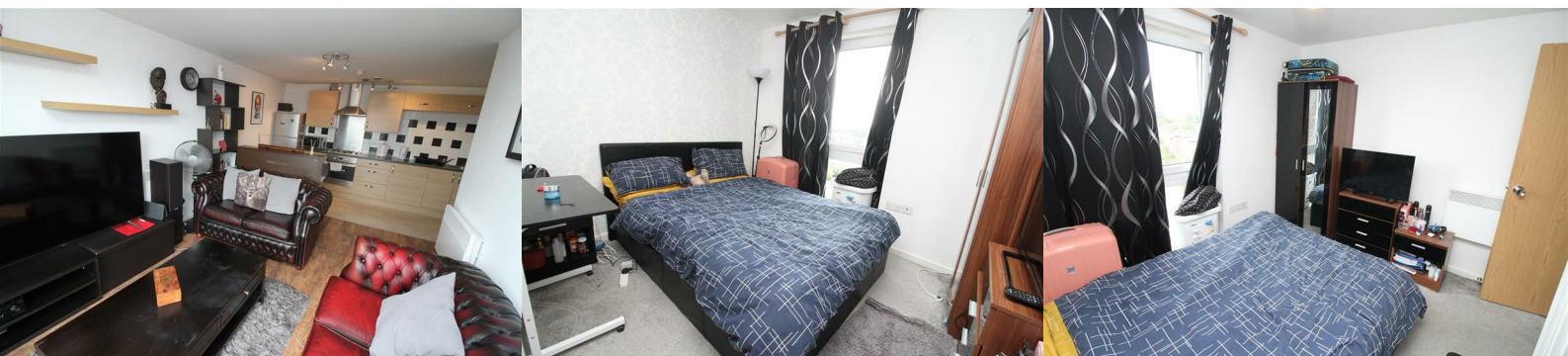
EWS1 CERTIFIED (B1 RATING-ACCEPTED BY A NUMBER OF LENDERS)- This is a modern two bedroom centred aspect apartment is a perfect first time buyers or investors. The apartment comprises of entrance hallway, spacious open plan lounge and Kitchen area, two bedroom with an En-suite shower room to the master bedroom, and a three piece bathroom suite. The apartment is on the 7th Floor also features a balcony with nice city view and functional lift . Currently Tenanted.

The apartment achieves £12,000 per annum.

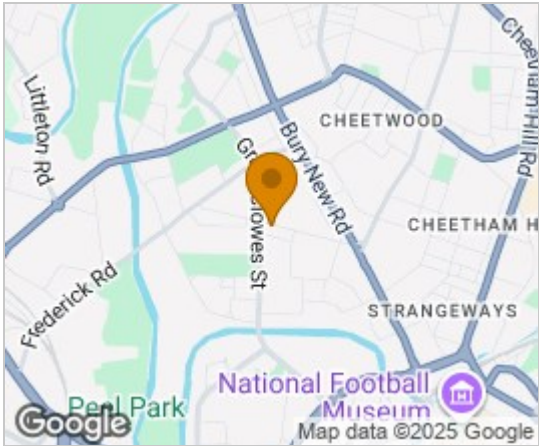
Proximity to stores, city centre, Deansgate, schools and surgeries.

It is approximately 1.3miles from Manchester city centre and Victoria Train station , and located next to all convenient bus routes. The apartment comes with secure parking space.

Call us for viewing arrangements today.



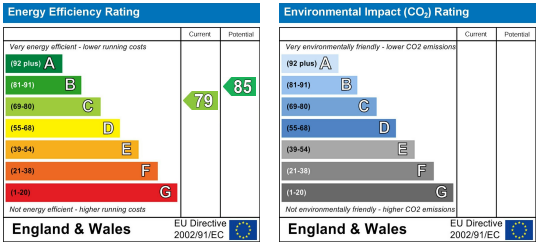
Area Map



Floor Plans



Energy Efficiency Graph



These particulars, whilst believed to be accurate are set out as a general outline only for guidance and do not constitute any part of an offer or contract. Intending purchasers should not rely on them as statements of representation of fact, but must satisfy themselves by inspection or otherwise as to their accuracy. No person in this firms employment has the authority to make or give any representation or warranty in respect of the property.